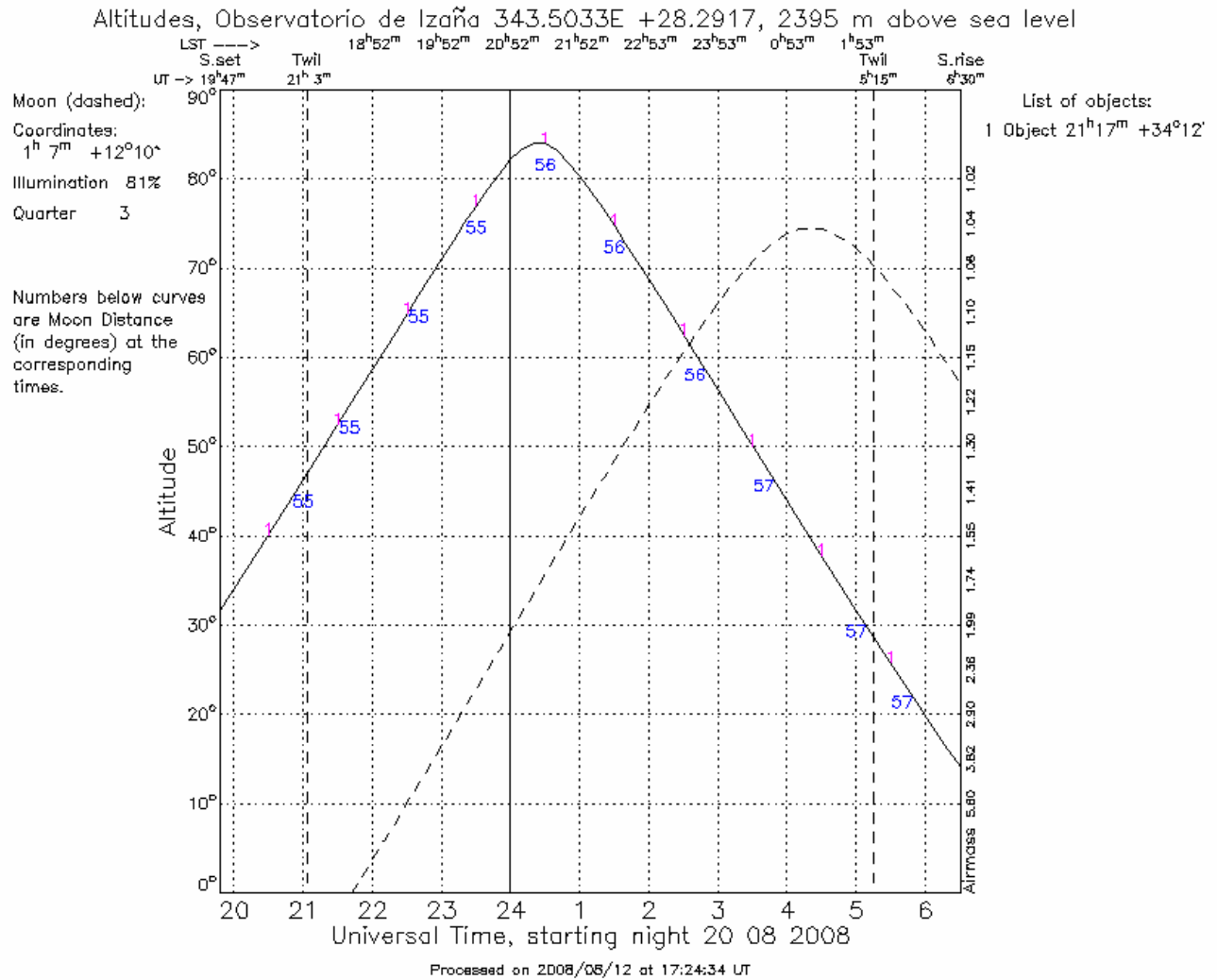
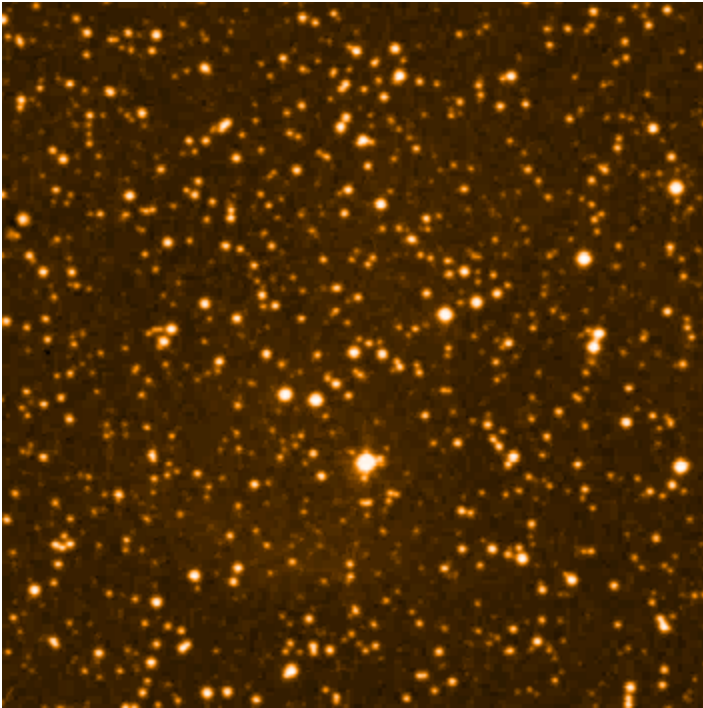


**Team:** 10/J  
**Telescope:** Teide  
**Night:** 20 August, 23:00 – 02:00 (Local Time)  
**Proposed Target:** Time Series Photometry of RXJ 2117+3412  
 $V = 13.16$  mag Period  $\sim 800$  s Amplitude = 50 mmag  
**Coordinates:**  $\alpha$ : 21 17 07  $\delta$ : +34 12.4





$$\sigma(n) = 1.6 \text{ mmag}$$

$$\sigma(a) = 0.17 \text{ mmag}$$

$$\sigma(f) = 1.7 * 10^{-7} \text{ Hz} = 0.17 \text{ } \mu\text{Hz}$$

$$\Delta T \text{ (Nyquist)} = 160\text{s}$$

$$\text{integration time} = 60 \text{ s}$$

$$T = 3 \text{ hours (duration of observations)}$$

$$N = 180 \text{ (number of measurement points)}$$

Team: 5/E

Telescope: Teide

Night: 20<sup>th</sup> Aug, 02-4:15

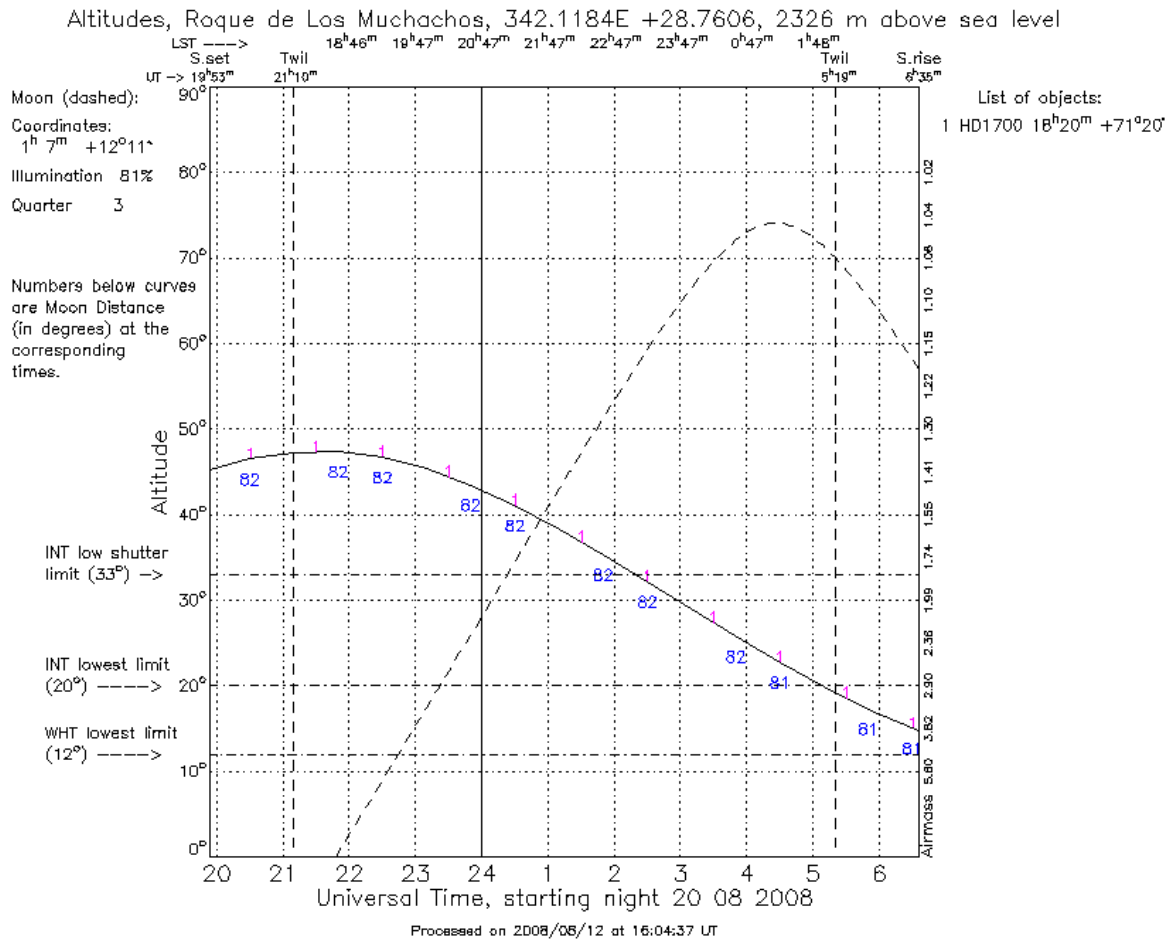
Proposed program: Time series of PG2303+243

V=15.50

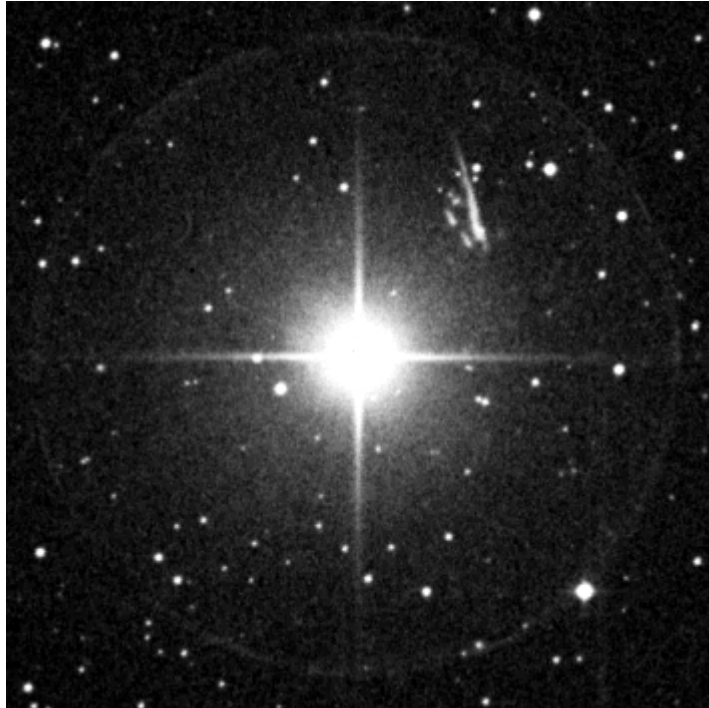
**Team:** 2/B  
**Telescope:** NOT  
**Night:** 20 August: 23:00 - 02:00

**Proposed target:** Doppler imaging of HD170000  
 V=4.2

**Coordinates:** 18 20 45.43 +71 20 16.132



Finding chart: N up, E left



# Proposal for observing time with NOT

Eugene Zakharov and Thomas Amby Ottosen  
– Team: 1/A –

August 13, 2008

**Telescope:** NOT

**Night:** 20.08.08

**Topic:** Eclipsing Binaries

1. BD And (11.30 [mag])

2. AB And (9.50 [mag])

**Period:**

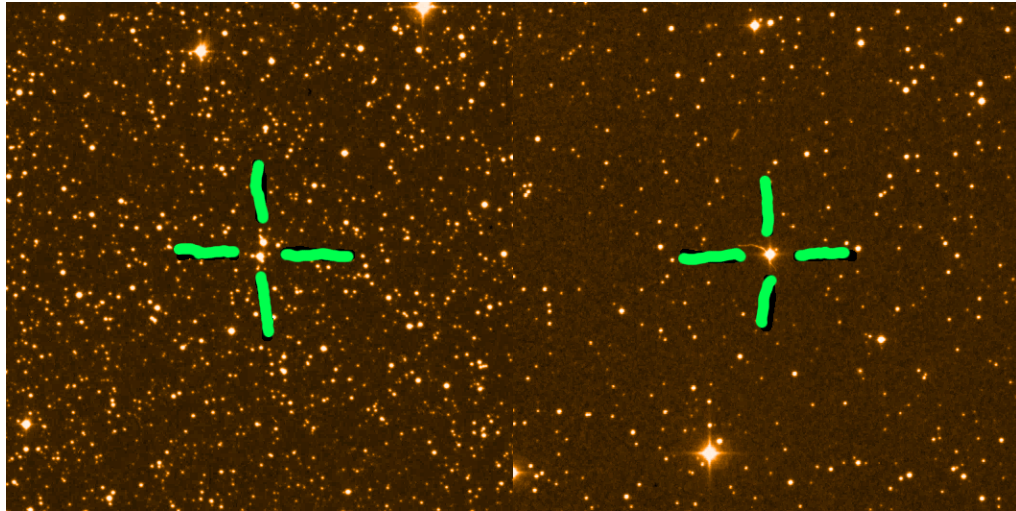
1. 0.4629 d

2. 0.3319 d

**Coordinates:**

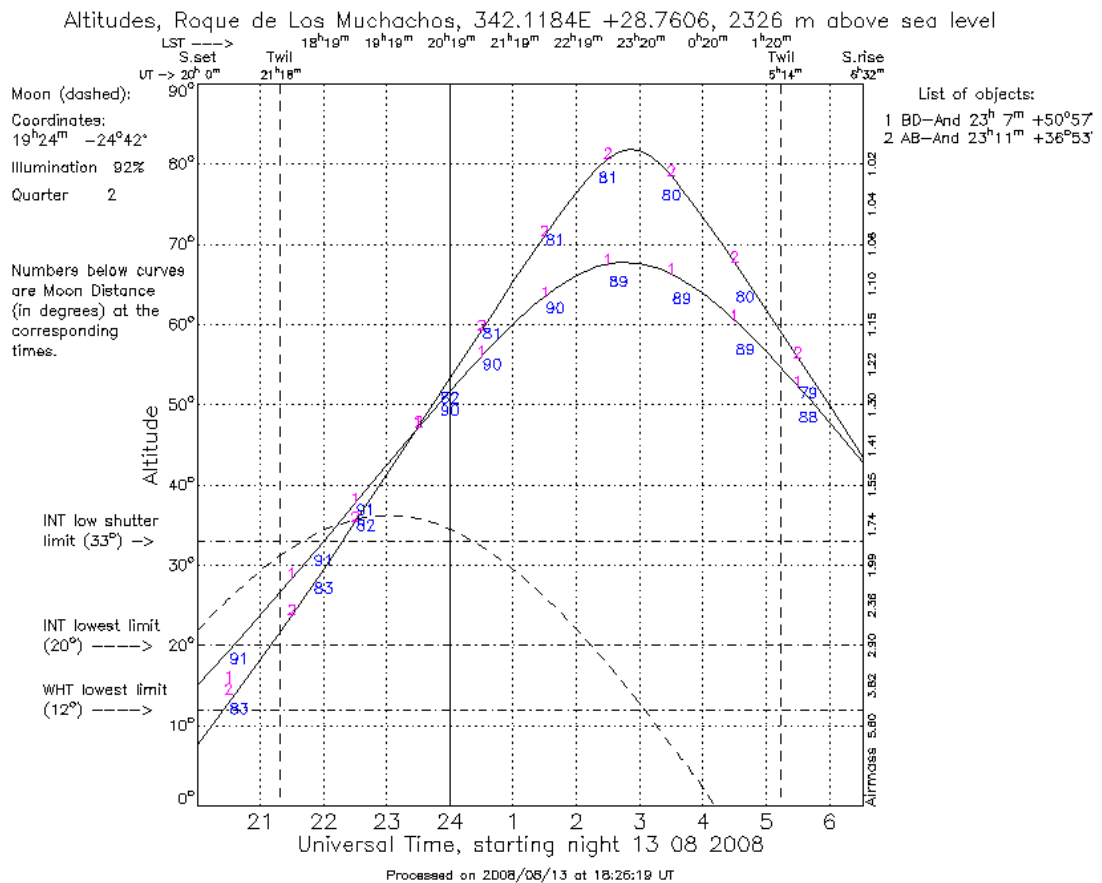
1. **BD And**  $\alpha_{2000} = 23\ 07\ 05$   $\delta_{2000} = +50\ 57\ 31$

2. **AB And**  $\alpha_{2000} = 23\ 11\ 32$   $\delta_{2000} = +36\ 53\ 35$



(a) BD And

(b) AB And



(c) Visibility plot